



PETROC SESTI - SELECTED VORTEX WORKS

A study of the anatomy of the Void.

The more interactive the artwork, the more alive it really is.

The sculptures spherical-optics play an unmatched interactive role between the viewer and the environment in which it is placed. Comparable in shape to the human eye the giant spheres flip the landscape upside down, interacting with the viewers every movement.

The landscape beyond the sculpture is warped and compressed into the unique display of spherical optics.

It's translucent presence hopes to address the static nature of architecture enhancing a buildings human experience by way of its lifelike swaying vortex. The viewer can rediscover the city as the artwork interacts with the buildings by optically bending and reconfiguring them.

Beyond the role time plays when interacting with the artwork, the perpetual liquid vortex captured in a sphere presents us with a wealth of global symbolism of both life, movement and the void often celebrated in Asian culture as Qi.



'SPHERE AND ANTIPRISM'

AEDAS ARCHITECT SH66, UNVEILED AT AEDAS, LWK &
PARTNERS ARCHITECTS H66 - 2022

AEDAS ARCHITECTS H66

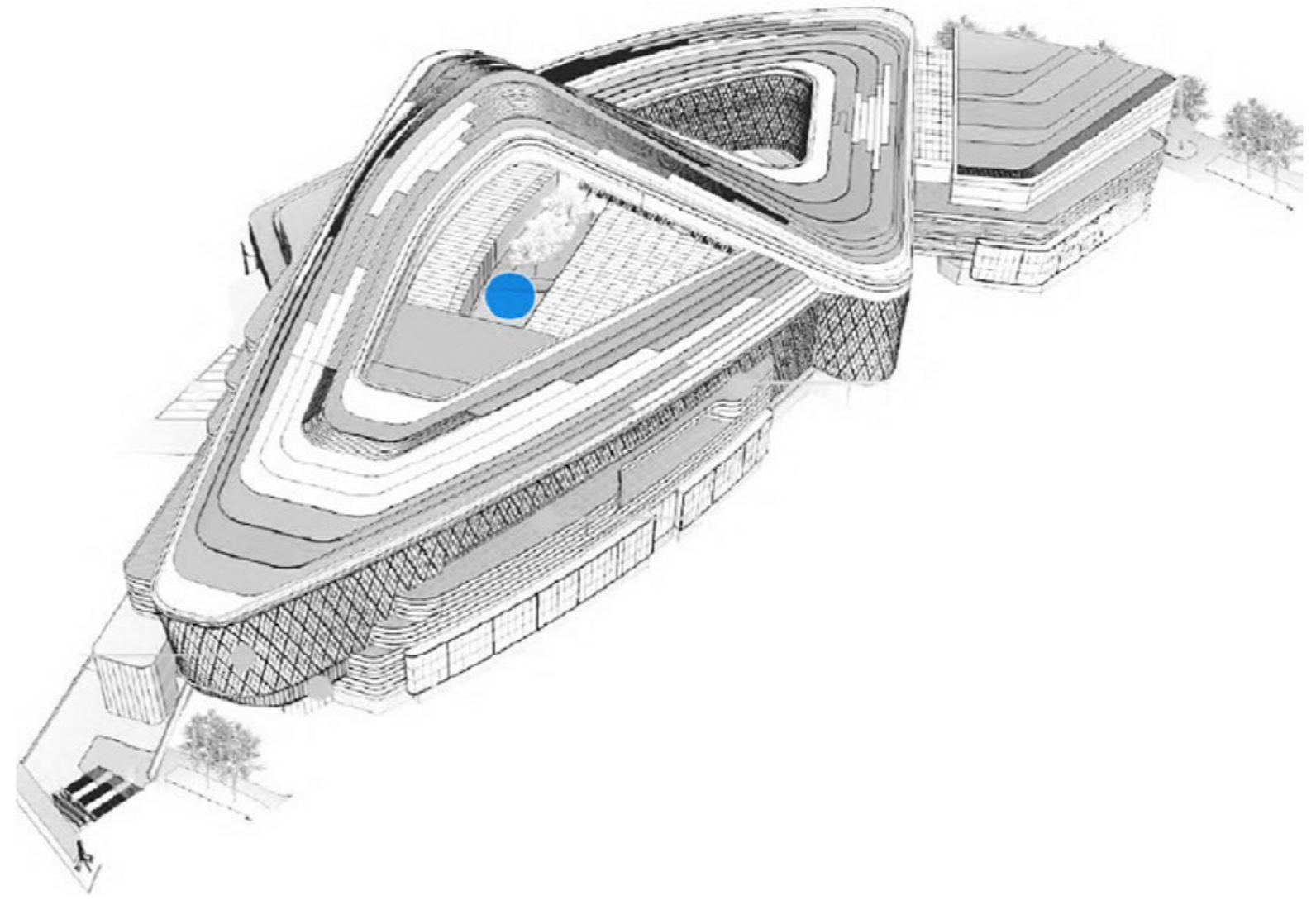
SPHERE AND ANTIPRISM

Unveiled at Aedas, LWK & Partners Architects H66









'LITERAL FORM'

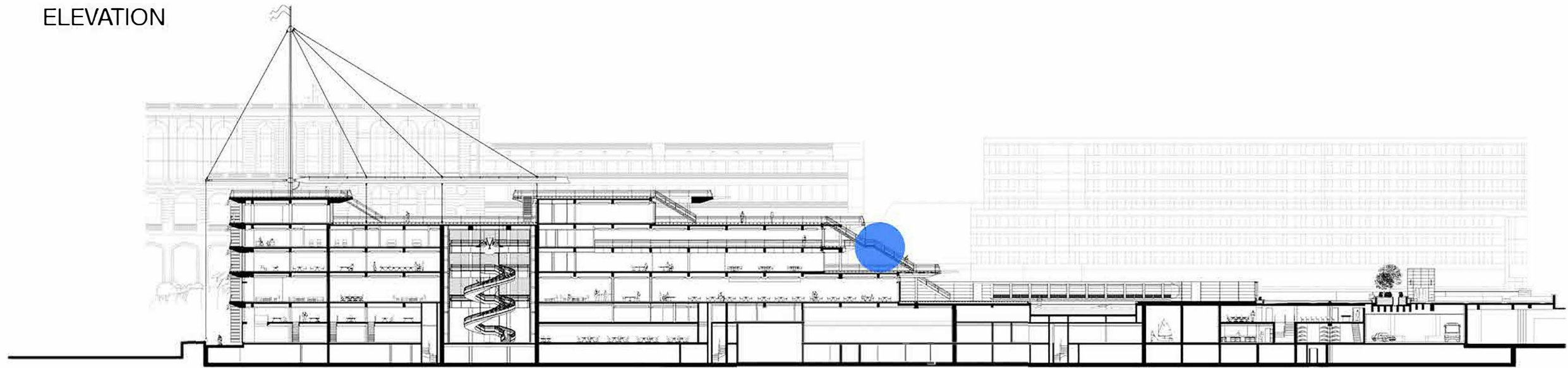
PERMANENTLY INSTALLED AT PRINCE ALBERT OF MONACO'S NEW YACHT CLUB
DESIGNED BY NORMAN FOSTER - 2018



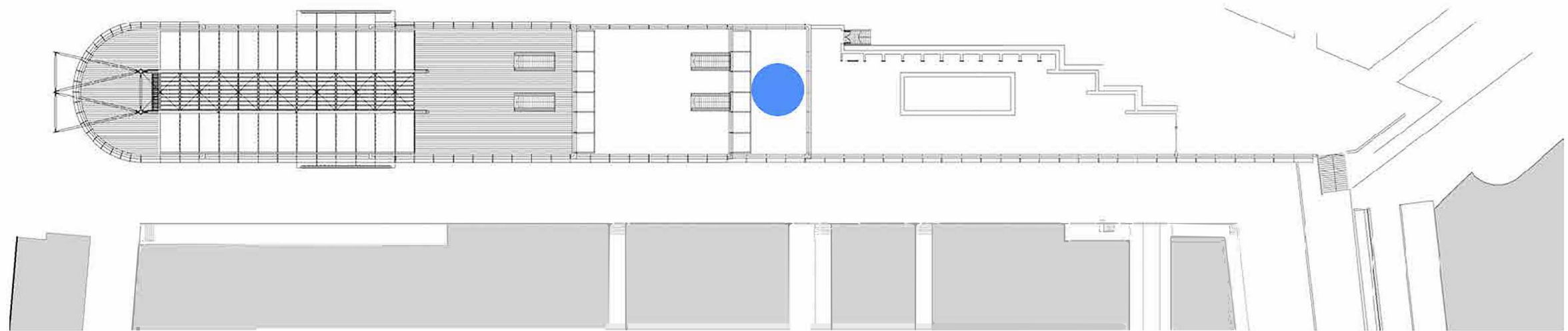
LITERAL FORM PERMANENTLY INSTALLED AT PRINCE ALBERT OF MONACO'S NEW YACHT CLUB DESIGNED BY NORMAN FOSTER.



ELEVATION



PLAN

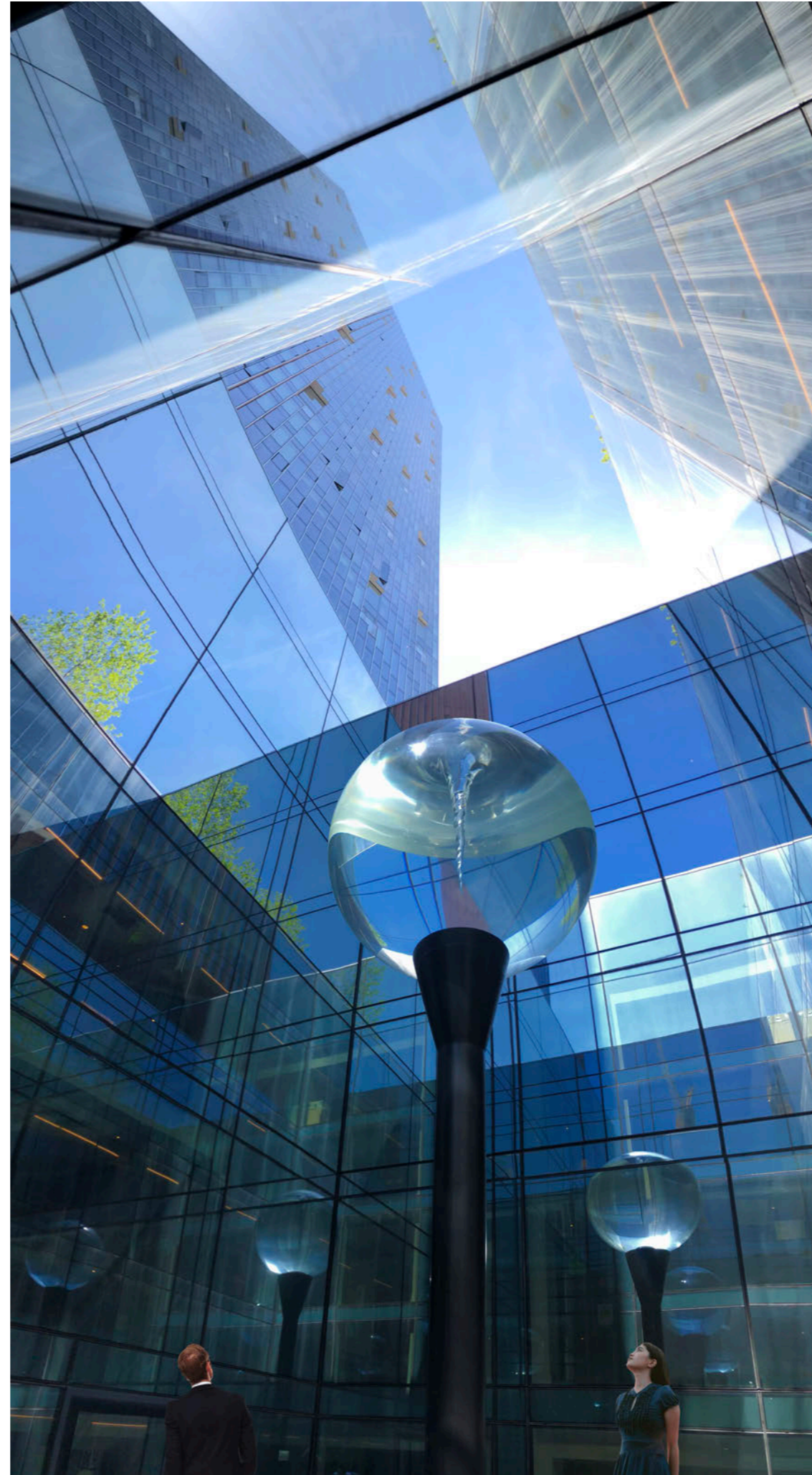


'ANATOMY OF THE VOID'

PERMANENT SITE SPECIFIC ARTWORK, LONDON - 2020



2020 - INAUGURATION OF ANATOMY OF THE VOID, PERMANENT SITE SPECIFIC ARTWORK, LONDON. COLLABORATION WITH SOM ARCHITECTS.

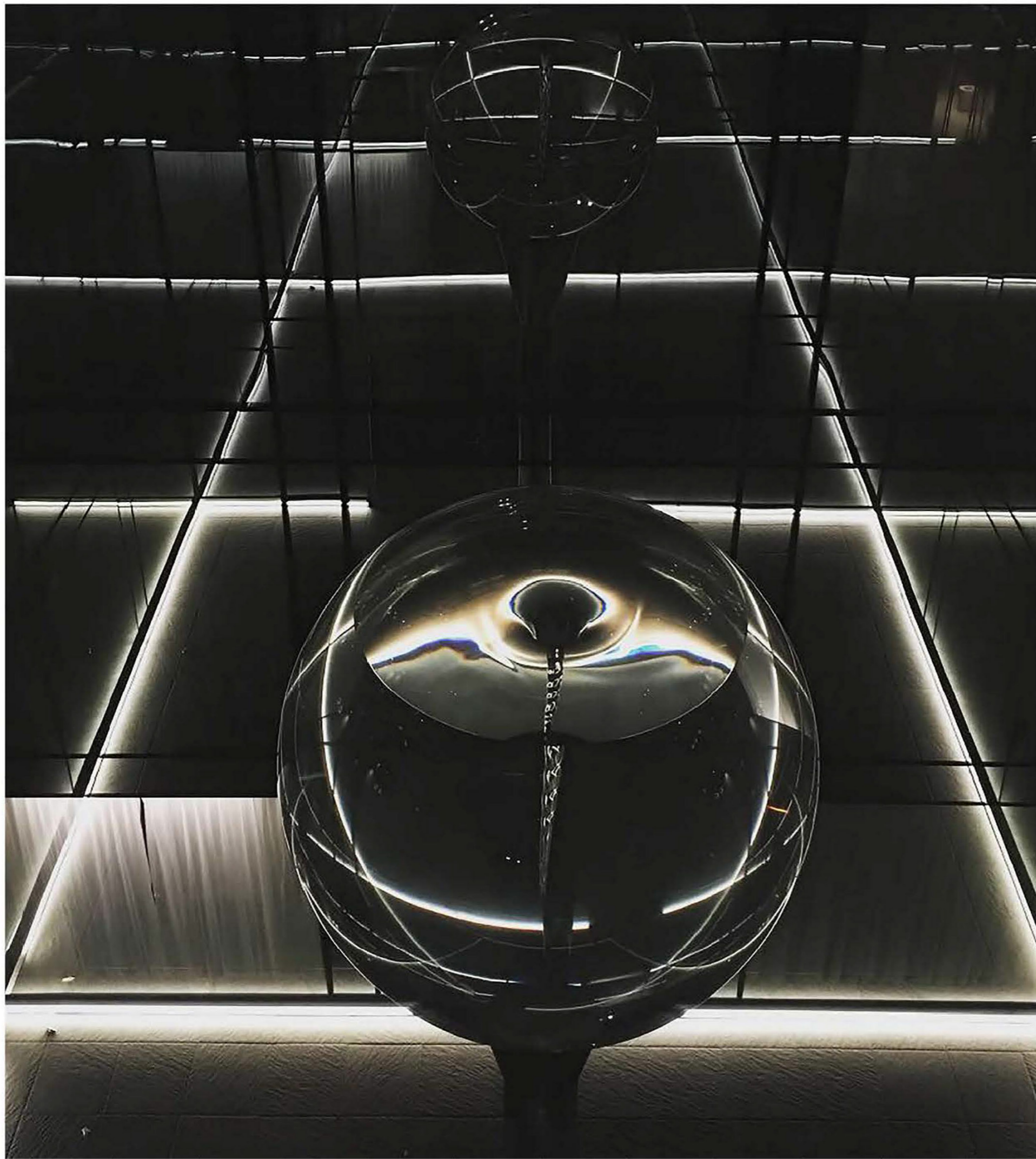


2020 - INAUGURATION OF
ANATOMY OF THE VOID,
PERMANENT SITE
SPECIFIC ARTWORK,
LONDON.
COLLABORATION WITH
SOM ARCHITECTS.



2020 - INAUGURATION OF ANATOMY OF THE VOID, PERMANENT SITE SPECIFIC ARTWORK, LONDON





'TIME FOLD'

SCULPTURE IN THE CITY, LONDON - 2013



**Wander the City's
public spaces
and discover
world-class
public art across
an iconic urban
landscape.**





'SPACE TIME'

KISTEFOS MUSEUM, OSLO, NORWAY - 2007



SPACE TIME, KISTEFOS
MUSEUM, OSLO,
NORWAY, BELL JAR





2007 - SPACE TIME,
PERMANENT COLLECTION,
KISTEFOS MUSEUM, OSLO,
NORWAY, BELL JAR

'VANISHING POINT'

ESPACE LOUIS VUITTON FOUNDATION, PARIS - 2012

2012 - VANISHING POINT, ESPACE LOUIS VUITTON FOUNDATION, PARIS



'ELAN VITAL'

NEW SHANGHAI MUSEUM OF CONTEMPORARY ART, SHANGHAI BIENNALE - 2012



'VANISHING POINT'

SELECTED BY SHEIKHA MOZA AND OMA ARCHITECTS FOR THE NEW QATAR FOUNDATION
HQ PERMANENT COLLECTION, DOHA BY ARCHITECT REM KOOLHAS - 2012

REM KOOLHAAS QATAR FOUNDATION



Vanishing Point

Selected by Sheikha Moza and OMA Architects for the new Qatar Foundation HQ
Permanent collection, Doha by Architect Rem Koolhaas



ARTIST BIO

Petroc Sesti is a British artist, born and graduated from art school in London where he currently lives and works. Sesti's work pushes the boundaries of art and science and goes beyond both, exploring in particular the ever-changing relationships between artwork, the viewer and the environment in which they are placed.

Both sculptures and paintings perform an interactive role by visually incorporating the location and movement of the viewer by way of vast optical lenses and Moire geometries, reconfiguring the landscape and providing the viewer with a unique and responsive interaction with the artwork.

His work is defined by a metaphysical sense of the edge of existence

"a view of nature beyond day to day human experiences, bringing him to study the cosmology, this is when one feels most alive. Often experienced in remote places, faced with the vastness of nature, at sea, in a rainforest or open sky's in deserts. It's in places like these that one can experience transcendence, boundless possibility and notions of the sublime."

He has collaborated with scientists from space programs to forestry scientists laser scanning trees in the rainforests.

EXHIBITIONS AND PERMANENT COLLECTIONS OF NOTE INCLUDE

Recent: Faena Art, Miami 2022 Heart Of Okeanos. Royal Academy Summer Exhibition 2022, Recycled bronze Tree Beacon.

13th Manifesta Biennale France 2021, 9th Shanghai Biennale, Vanishing Point- Paul Kasmin Gallery NY, Turbulence - Espace Louis Vuitton Foundation Paris, A Shot In The Head - Lisson Gallery, British Art Today - Etemad gallery Dubai, Turbulences - Beyond Museum S Korea, Solar Relay / Time Fold - Sculpture in the City in London, Elan Vital - New Shanghai Museum Of Contemporary Art.

Permanent collections including: the Kistefos Museum Norway, MONA Museum Tasmania, the Boghossian Foundation Brussels, the Rockefeller Collection New York, the Sheikha Moza Collection - Rem Koolhaas's Qatar Foundation, Norman Foster's Yacht Club Monaco, SOM's Manhattan Loft Gardens Stratford - International London, YUZI Museum China, H-66 Aedas LWK & Partners Architects Shanghai.

PHILANTHROPY

As founding director he created Platform Earth with co-founders Ruth Ganesh and Mollie Dent Brocklehurst, an environmental arts charity bridging the divide between the arts and sciences, mitigating climate change by protecting and restoring kelp forests and blue-carbon habitats, a marine capture focused initiative uniting all the arts in countering the industry's carbon emissions. The organization became a charity in 2021. He is a member of the AON Community Art Award judging panel at the Cheese Grater tower in London and the Prudential Eye Art Awards, a member of their contemporary art awards selection committee and co-presenter of their sculpture prize.

